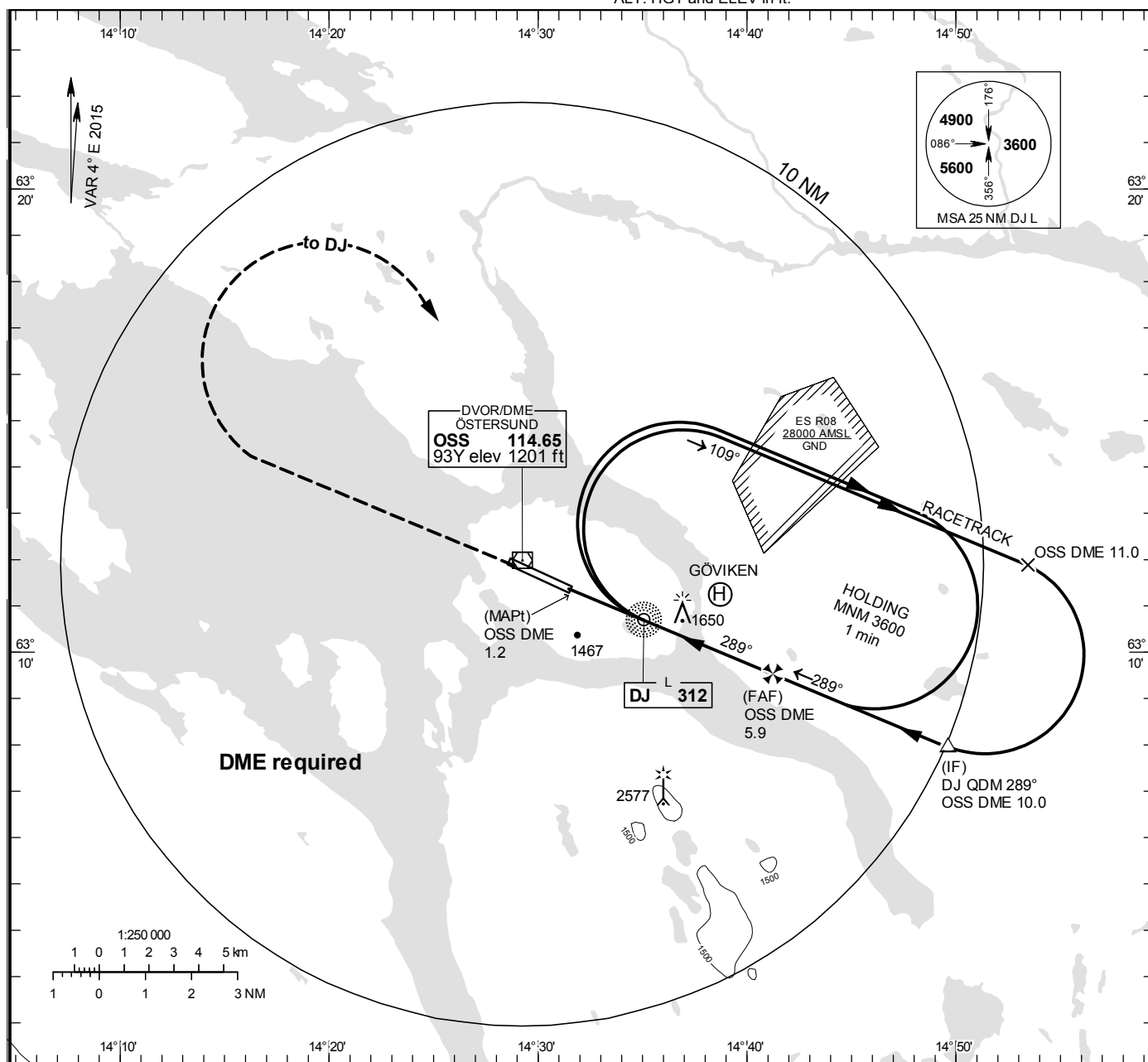


ÄRE ÖSTERSUND
NDB RWY 30

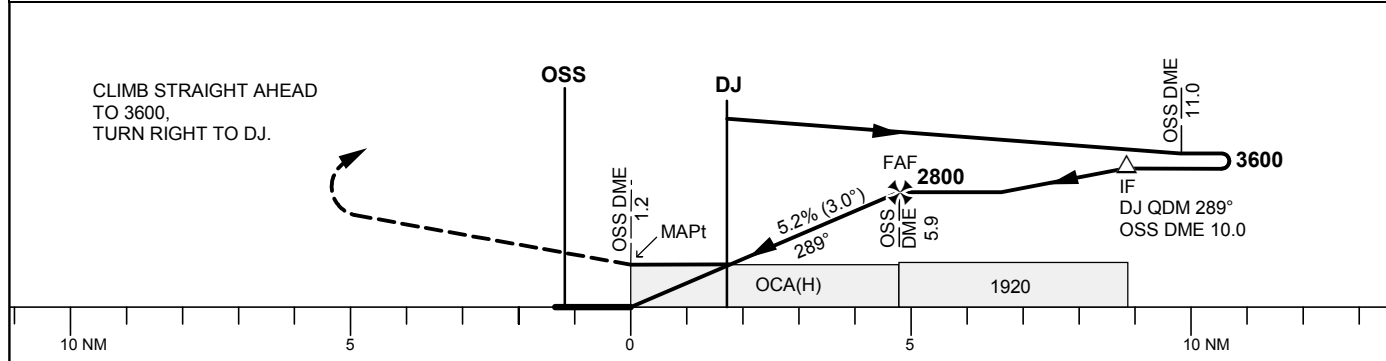
ÖSTERSUND TOWER 135.655

THR ELEV 1233 ft, AD ELEV 1233 ft
OCH are related to THR.
Circling OCH are related to AD ELEV.
BRG are MAG
ALT. HGT and ELEV in ft.

INSTRUMENT
APPROACH
CHART – ICAO



TA 6000 ft AMSL Final APCH line offset 2° *Timing not authorized for defining the MAPt



OCA (H)					Final approach	Distance FAF-MAPt 4.7 NM*							
Cat of ACFT	A	B	C	D	DME OSS NM	5				4			
					ALT	2500				2180			
Straight-in Approach	1900(670)				GS	kt	80	100	120	140	160	180	
					Time	min:s	3:32	2:50	2:21	2:01	1:46	1:34	
Circling	1900(670)	1950(720)	2050(820)	2980(1750)	Rate of descent	ft/min	425	530	635	745	850	955	

CHANGE: Editorial